



**Accelerate & Develop
Company Building**

Building companies And making a difference

We're an Israeli venture firm, focused on Israeli based startups. We invest in pioneering early stage startups, building with them from the ground up into companies that make a difference.

Over the past 15 years, we've built and run company building and value add investing programs for global tech giants including Google, Microsoft, LivePerson and Deloitte.

We've deployed over \$400M of VC funding and built companies from seed to Unicorns. Now we're applying what we learned to build the Israeli early stage ecosystem.

Let's do great things, better And faster, together.

AID TEAM



Lee Moser

Managing Partner

- Partner, iAngles
- Active angel investor
- Chief of staff for Israeli ambassador in Washington
- B.A. Tel Aviv University, MBA Kellogg Northwestern



Ariel Cohen

Partner

- 15+ years of product management experience
- Head of Product - Amdocs Integration Services
- Founder & GM of LivePerson Developer Ecosystem
- B.A, Business Management & Marketing, IDC Herzliya
- M.A, Law, Bar-Ilan



Arnaud Rodrigue

Partner

- Managing Partner New Mobility, Cukierman & Co.
- CEO, Learni
- Organizational Manager, SpacEL
- CEO, Ingersoll Engineers
- Professor, HEC Paris



Roy Geva Glasberg

Managing Partner

- Founder and GM for Google global startup programs
- Director startup integrations at Live Person
- Manager startup and integrators ecosystem for Microsoft
- Consultant Deloitte and HayGroup
- LLM, BA, LLB IDC Hertzelia, EMBA Financial engineering, HUJI



Tal Eden

Advisory CTO

- CTO at curve.tech
- Chief Data Scientist at the Sheba Hospital Innovation Center
- Veteran Algorithm Developer and Data Scientist
- BA in Mathematics, MA in psychology, licensed clinical psychologist



Gary Ginsberg

Advisory Board

- SVP & Global Head of Communications, Softbank
- EVP, Time Warner
- EVP, News Corp
- Founding Editor & Counsel, George Magazine
- Founding Partner, 25Madison



Jay Rosenzweig

Advisory Board

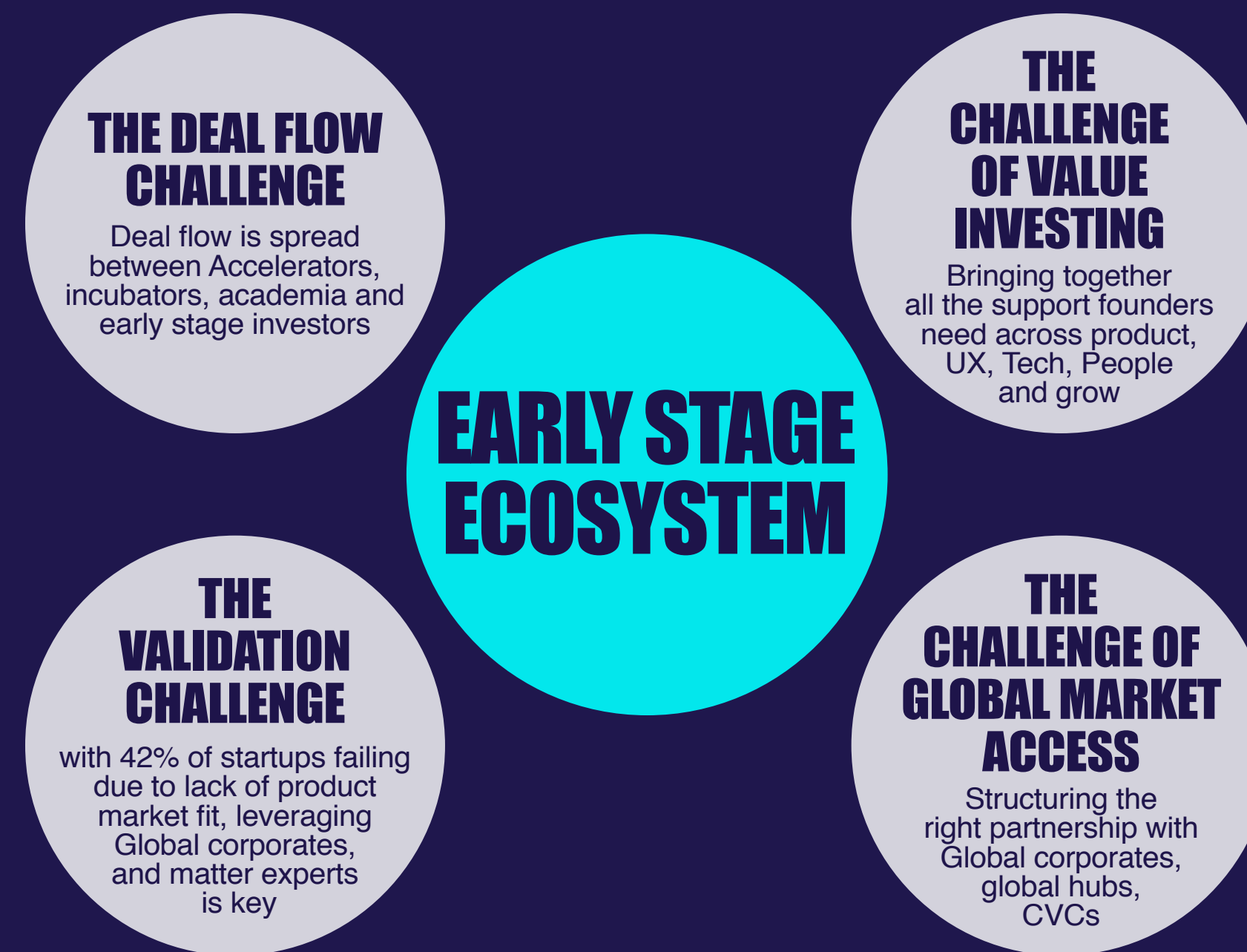
- Founder & CEO, Rosenzweig & Co.
- Strategic Partner, Hyperloop Transportation Technologies
- Founding Partner, Winston House
- Board Director, Raoul Wallenberg Centre for Human Rights
- J.D., LL.B, B.C.L., B.A. Philosophy from McGill University

Why

We believe founders can do better and faster, for their companies and for their investors

It's time to accelerate the traditional VC model by bringing together the company building ecosystem under a global and distributed platform.

Harnessing the full power of the early stage VC ecosystem to source and develop pioneering founders and transformative technologies.



What makes us unique

We're a company builder based fund, focused entirely on building companies through a full cycle growth house

1 AnD Studio

Building the early stage deal flow

We drive an early stage company building studio working closely with EIRs and promising founders in conjunction with our global corporates, academia, early stage investors and accelerators

2 AnD Validation

Building a comprehensive DD

Our Due diligence includes corporate validation, matter experts and experienced entrepreneurs covering every aspect from product market fit through every aspect of development tech and team

**EARLY
STAGE
GROWTH
HOUSE**

3 AnD Company Builder

Building our portfolio companies

We build hand in hand with our founders, completing their team with product, UX, Tech People and growth deep hands on support, getting them ready for scale.

4 AnD Global Hubs

Building a global market access network

With our on the ground partners we provide local presence, personal, legal and accounting, corporate access, POCs and integration to the leading global markets

How do we do it

Accelerated AnD Developed venture model

We are a studio based fund, serial entrepreneurs and global matter experts, focused entirely on the execution of building and scaling companies.

AnD Studio

a powerhouse of dealflow creation

We run IDCX Accelerator, EIT Israel Startup Hub and more corporate accelerators

Access to over 1,000 startups a year

AnD Validation

our corporate validation partners includes tier 1 corporates worldwide
Add logos

Validation of 20-30 pioneering startups

AnD Company Builder

We take big stakes - 18% average with deep commitment to get them ready for scale and building their market access

Investing and building 15-17 startup

AnD Hubs

Providing our startups with global market access in NYC, SF, Tokyo, Dubai and Delhi

Estimated 30% of portfolio acquired by corporates

AnD Exit Strategy

build the right exit strategy for each portfolio company from IPO through corporate acquisition and secondaries

Follow up investment in 50% of portfolio

FLEXIBLE EXIT STRATEGY

CAPITALIZING ON EACH COMPANY

EARLY
ROUNDS

27%

DEALS UP
TO 500M
show 27%
success rate

5th
Round

2%

DEALS
OVER 500M

6th
Round

1%

UNICORNS

WE AIM FOR THE SWEET SPOT

WE WILL BE FLEXIBLE ON
CASE BY CASE BASIS

PORTFOLIO

We invest in leading companies focused on transformational technologies, with deep focus on data, AI and validated market fit.

We work closely with our growth & corporate partners to validate AnD accelerate entrepreneurs building pioneering products.



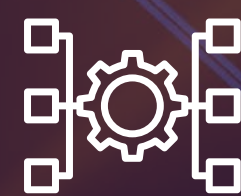
AI



XAAS



DATA



AUTOMATION



**AI driven marketing
planning platform for
B2B marketing leaders**

AND GROWTH PARTNERS



Noa Franko-Ohana
Head of Ecosystem Innovation
Seagate



Moran Sher Ronat
VP HR
ECI Telecom



Adi Hoorvitch Lavi
Director of Business
Poalim Hi-Tech



Moran Nir
Senior Startup Business
Amazon Web Services



Sunil Rao
Strategic Business Development
Amazon



Noam King
Worldwide IoT
Microsoft



Shay Erlichmen
Senior Director
Samsung NEXT



Eran Levy
General Manager
ENEL Innovation



Lior Weizman
Director
SAP.iO Foundry



Ofer Shaltiel
Head of B2C Israel
Snap

Snap Inc.

DELL



IGNITION POINT

aws

monday.com

bank hapoalim



ISRAEL EXPORT INSTITUTE

enel

Deloitte.

MIXER
WORK & LOUNGE



TRACK RECORD

+500 global startups Accelerated as part of building and managing Google's Global startup programs & portfolio

Identified & invested in over 50 deep tech startups, worldwide

Deployed over \$400M of VC funding

Angel investing in 12 startups in Israel

Building & managing IDCX Accelerator, EIT Israel Startup Hub

Strategic Venture Partner to Ignition-Point Inc. Japan, Mixer Work



INVESTMENT TRACK RECORD

Outdoorsy

AlphaTAU

ZOOZ

seeTrue



tellium technologies

RIVIN

tovala
It's about time.

nexa3D

BlueNalu

foretellix

BrainQ

EYEWAY
ALL IS ILLUMINATED

WSC Sports

PRISMA PHOTONICS

Lime

NEUREALITY



NEURA

Gefen Technologies

30L Pharma
Breath Of Life

core | photonics

Brodmann

unispectral



SIXGILL
Deep, Dark & Beyond

JUMP

VAYAVISION

data.world

7THIRTY

CytoReason

*This slide represents some of the companies previously invested in by the GPs either personally or in former job roles.



COMMERCIAL TERMS

Target Fund Size: \$50M- \$75M

Fund focus: AI & Data driven software

Management fees: 2% yearly

Set up fees up to: 1.5% one time

Carried interest: 20%

Fund investment Period: Up to 4 years

Fund duration: Up to 8 years



Summary

Studio based fund

Experienced & multidisciplinary team

Unique deal flow by AnD Studio & local hubs

Validation by our corporate & professional network

Company building from the grounds up

Global markets access with our partnership hubs

Flexible returns via to our flexible exit model

Better & Faster, Together

This presentation (the “Presentation”) is for informational purposes only and does not constitute or form any part of any offer for sale or subscription of, or solicitation of, any offer to buy or subscribe for any limited partnership interests or other securities of And Ventures Partners Fund LP, (in formation) (the “Fund”) or any of its affiliated entities nor shall it or any part of it form the basis of, or be relied on, in connection with, any contract, commitment or any investment decision whatsoever in Israel or in any other jurisdiction. The information in this Presentation should not be relied upon as any representation or warranty, express or implied, of the Fund, its general partner (in formation) (the “General Partner”) or any of their affiliated entities. No reliance should be placed on the fairness, accuracy, completeness or correctness of the information or opinions contained in this Presentation. This Presentation has been prepared to provide preliminary information about the Fund to a limited number of prospective sophisticated and experienced investors, to assist them in determining whether they have an interest in investing in the Fund. No legally binding obligations will be created, implied, or inferred from this Presentation.

There are certain risks associated with an investment in the Fund. Investment in the Fund may not be suitable for all investors. There can be no assurance that the Fund will achieve its investment objectives. Each prospective investor should independently evaluate the merits and risks associated with an investment in the Fund and must be able to withstand any and all losses in connection with its investment. This Presentation and any related materials provided herewith do not purport to be all-inclusive or to contain all the information that a prospective investor may desire in investigating the Fund and the information contained herein is subject to amendment, addition and updating. This Presentation is qualified in its entirety by the terms of the definitive governing documents relating to the Fund.

The Fund will be a newly created investment vehicle with no operating history. The past performance of persons or entities affiliated with the General Partner or any of the persons mentioned in this Presentation is not necessarily indicative of any future performance or results. This Presentation may contain statements that constitute forward-looking statements which involve risks and uncertainties. These statements include descriptions regarding the intent, belief or current expectations of the Fund or its principals with respect to the results of business operations and financial condition, industry, environment, and future events and plans of the Fund. Such forward-looking statements are not guarantees of future results, performance or achievements. Actual results, performance or achievements of the Fund may differ from those expressed in the forward-looking statements as a result of various factors and assumptions, such as known and unknown risks and uncertainties. By their nature, forward-looking statements involve risks and uncertainties because they relate to events and depend on circumstances that may or may not occur in the future. In light of these risks and uncertainties, actual events, results and developments could differ materially from those expressed or implied by the forward-looking statements. Reliance should not be placed on these forward-looking statements, which reflect the view of the Fund or its principals as of the date of this Presentation only. The Fund does not undertake any obligation to update or revise any of the forward-looking statements, whether as a result of new information, future events or otherwise.

Certain information and factual statements (including markets or trends) contained herein are based on or derived from publicly available documents or independent third party sources. Although such information is believed to be accurate and that the sources from which it has been obtained are believed to be reliable, the accuracy of such information and the assumptions on which such information is based have not been independently verified. None of the Fund, the General Partner or any of their respective affiliates, advisers or representatives shall have any liability whatsoever for any loss howsoever arising, whether directly or indirectly, from any use, reliance or distribution of this Presentation or its contents or otherwise arising in connection with this Presentation.

This Presentation does not constitute an offer to sell or a solicitation of an offer to purchase interests in the Fund. No securities commission or securities regulatory authority or other regulatory or governmental authority has reviewed, passed upon or endorsed the accuracy or adequacy of this Presentation. The limited partnership interests of the Fund will not be registered under the securities laws of any jurisdiction. This Presentation is strictly confidential and for internal use only for the sole purpose of evaluating a possible investment in the Fund. Under no circumstances are its contents to be reproduced or distributed to the public, press or otherwise. Neither this Presentation nor any of its contents may be used without the prior written consent of the General Partner.





THANK YOU

CONTACT US: INFO@AND-VENTURES.COM

AND